



PRIM TECH
INDUSTRIES

Engineering & Industrial Solutions

oil & energy

www.primtechind.com

CNC SERVICE



FABRICATION SERVICE



WE PROVIDE A PROMINENT & RELIABLE FABRICATION UNIT WHICH COMPILES A VAST VARIETY OF LATEST MACHINERY & EQUIPMENT TO ENSURE BEST QUALITY WITH PRECISION.

ENGINEERS, WELDERS, FITTERS & HELPERS WITH STRONG AND SKILLED MANPOWER HAVING INDUSTRIAL EXPERIENCE OF OVER AND ABOVE 15 YEARS WE PROMISE THE BEST FABRICATION SERVICES.

WELDING FACILITY

TIG Welding
MIG Welding
Argon Welding
Flux core Welding
Arc Welding

OTHER FABRICATION EQUIPMENTS

Bandsaw cutting machine
Cut off saw machine
Verity of hand grinders
High capacity OHC
Shotblasting unit



TANK TOP LOADING ARM

This loading arm is based on an easy to operate mechanism which includes 3 to 4 swivel joints providing easy moment according to requirement. Tank top loading arm is used for top loading where vehicle is at fixed distance from the rise pipe and in a fixed reach area. Tank top loading arm is available in 2", 3" & 4" size, MOC- Carbon Steel, stainless steel, aluminium.

JACKETED LOADING ARM

This loading arm system is useful for handling various products which have to be maintained at specific temperature. The jacketing around the arm provides isolation from out atmospheric temperature at the same time material inside jacket helps maintain temperature of the product inside the arm.



BOTTOM LOADING ARM

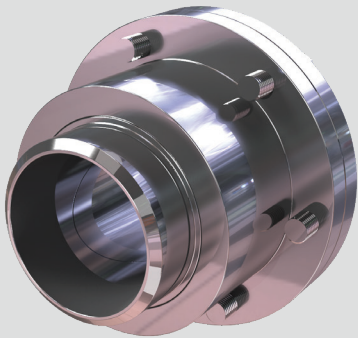
This loading arm is more efficient and assures more safety while handling chemicals, liquid petroleum products as well as liquefied gases. Bottom loading arm provides more efficiency for loading and unloading of the product than conventional top loading system with similar easy to operate mechanism. Bottom loading arm is available in 2", 3" & 4" size, MOC- Carbon Steel, stainless steel, aluminium.

FLOATING SUCTION UNIT

This kind of systems are used within storage tanks for petroleum and aviation products. It always floats on the surface of the liquid, the inlet to the pump is held in the clean dense product regardless of the constantly changing liquid level. For tanks with floating roofs, large bore roof skimmers move with the roof to drain away unwanted liquid. Floating suction come in a range of designs to suit buried, above ground, semi-buried and vertical tanks as well as for use with articulated drainage units with a floating ceiling/roof.



ACCESSORIES



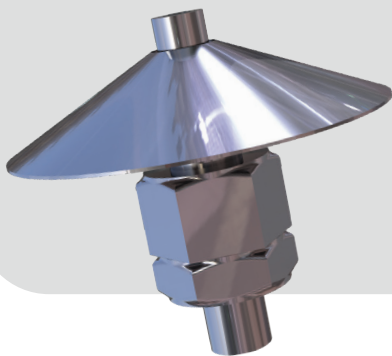
SWIVEL JOINT

Swivel joint is a mechanical part of loading arm which provides smooth and efficient movement of arms avoiding spillage. Our design makes sure that the Swivel Joints are most reliable and efficient while functioning at the same time giving a remarkable life span.

Our product goes under all the necessary tests and inspections to ensure the quality. Swivel joints are available in variety of sizes with material of construction Carbon steel, Stainless steel and Aluminium.

SPRING BOX ASSEMBLY

Spring box is a unit which maintains the position of arm while balancing its weight. Our design ensures a steady and safe loading and unloading of the product.



VACUUM BREAKER

Vacuum breaker valve is an important component to assure proper drainage of fluid after the transmission.

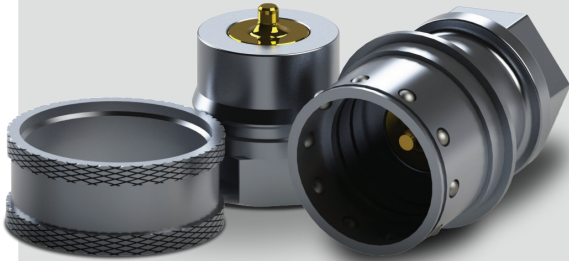
This mechanism allows the safe loading and unloading with zero spillage of the product.

O-RINGS & SEALS

O-Rings & Seals are available in variety of material according to requirement. Our design of the seals ensures zero spillage.

COUPLINGS

QUICK RELEASE COUPLING



Quick release coupling is a mechanical device used for frequent connection and disconnection of fluid lines. The double shut off coupling is with built in poppet valve in both coupling halves. When coupling is disconnected the residual fluid is prevented from spill over. Once connected, it provides leak proof connection in seconds, without use of tools. Use of quick coupling in the system reduces the down time. Quick coupling is available in different size and material variant to meet application demand.

BREAK AWAY COUPLING

Break Away coupling is the new product which you have to replace with Emergency Release coupling. (Pictures Attached, you can select the right one) Content for Break Away Coupling

"Breakaway couplers also allow rapid removal of the mobile tankage in emergencies. The safety breakaway coupling is the "weak link" in your process flow, designed to pull apart, close both ends of the flow path, and then can easily be put back together to continue operation.

Materials: Stainless Steel, Aluminium

Size: 1/2" - 8"

Applications: Liquid, Dry Gas, Cryogenic

Handle options: Round, Square Grip, Knurled Grip, Double Square (Red, Blue, and polished Stainless Steel)"



DRY BREAK COUPLING

Connects and disconnects transfer lines with no spillage. Valves open and close automatically on connection and disconnection. This reduces the possibility of human error in transfer operations and reduces spillages to virtually zero.

Materials: Stainless Steel, Aluminium

Size: 1/2" - 8"

Applications: Liquid, Dry Gas, Cryogenic

Handle options: Round, Square Grip, Knurled Grip, Double Square (Red, Blue and polished Stainless Steel)"

Prim Tech Industries

Prim Tech Industries is among the leading technology & engineering driven companies which comprises of 'CNC' & 'VMC' machines along with shot blasting equipments.

Prim Tech Industries is a superior design, deals & service organisation with the provision of customized bulk fluid handling and safety solution for loading and unloading product in the oil and gas, synthetic, petrochemical, chemical, pharmaceutical, cryogenic and avionics area.

Prim Tech also provides in-house fabrication services.

CONTACT US



+91 9082144991
+9867163089



www.primtechind.com



sarvesh@primtechind.com



W277, Prim Tech Industries Pvt Ltd, Rabale MIDC,
TTC Industrial area, Navi Mumbai - 400701.